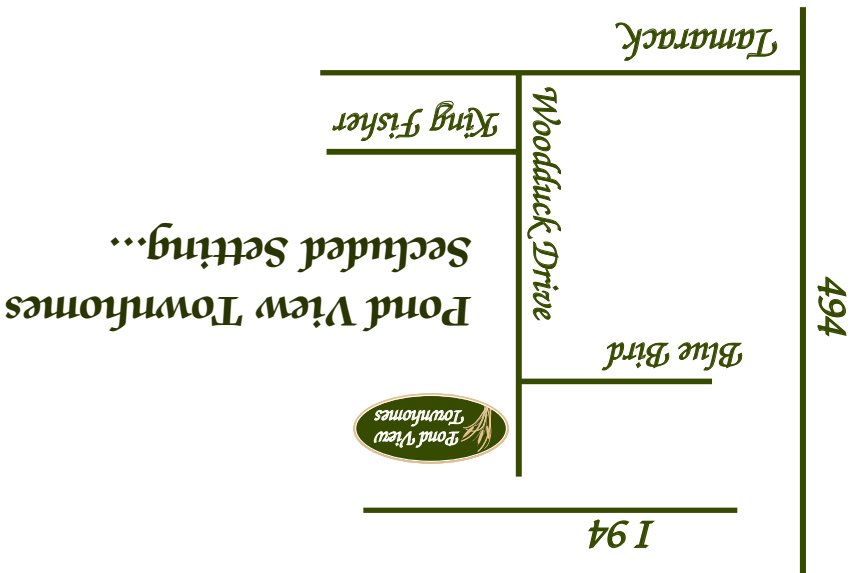




431-G Woodduck Place
Woodbury, MN 55125



Getting There...

From 494 - go East on Tamarack Drive, then North (or left) on Woodduck Drive approximately one mile, Pond View will be on your right on Woodduck Place.

From I-94 - go South on Radio Drive to Tamarack Drive, then West (right) to Woodduck Drive approximately one mile to Woodduck Place.

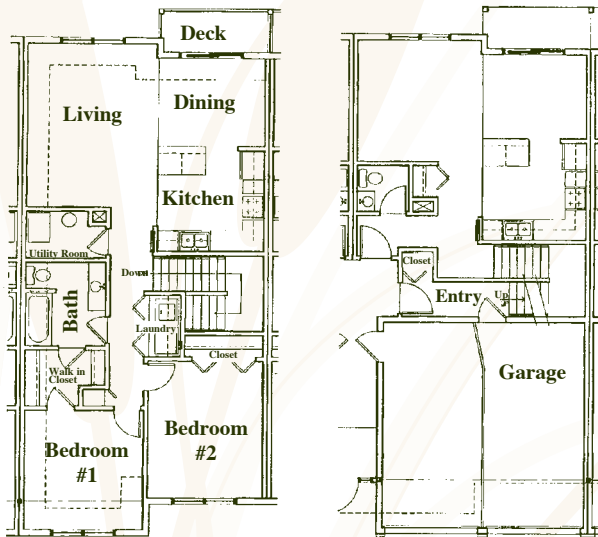
Your New Home Includes...

- Spacious 2,3 and 4 bedroom townhomes
- Fully equipped kitchen to include: range, refrigerator, dishwasher and garbage disposal
- Full size washer and dryer in each home
- Window treatments provided
- Nine foot and vaulted ceilings in select floorplans
- Individual Central Heat/Air Conditioning
- Generous storage to include walk in closets
- Attached single or double garage included in monthly rent
- On-site play area
- Patio/balcony

Your Community...

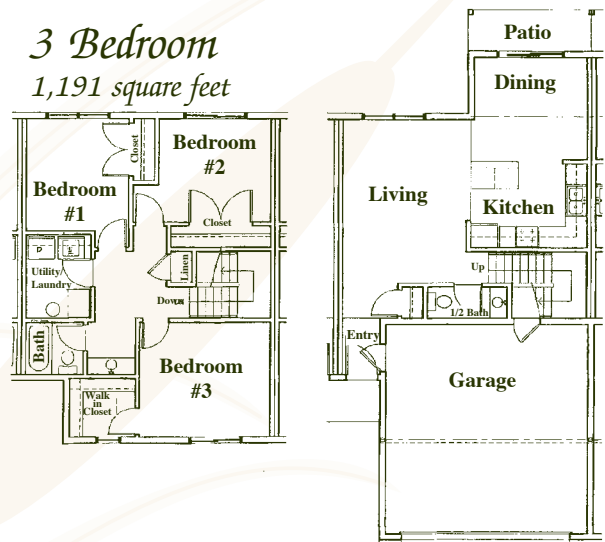
- A secluded setting surrounded by a City Park, Nature Trail and Pond
 - Adjacent to the Tamarack Village Shopping Center
 - Minutes from St. Paul or Hudson
 - School District # 622 serving No. St. Paul, Maplewood & Oakdale
- Skyview Elementary School
 Skyview Middle School
 Tartan Senior High

The Floor Plans...

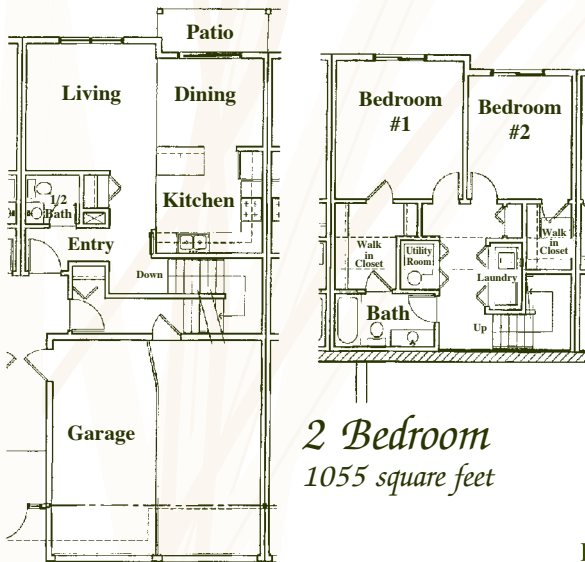
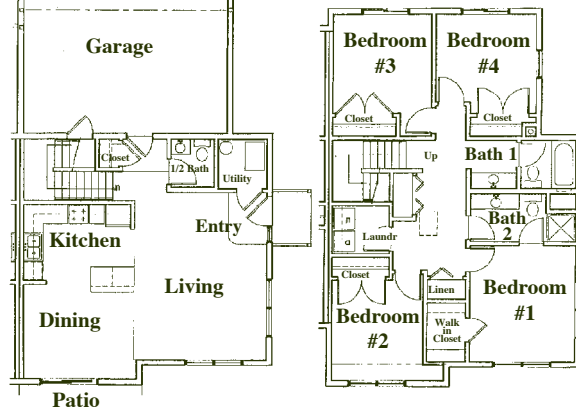


2 Bedroom Flat
961 square feet

3 Bedroom
1,191 square feet



4 Bedroom
1,479 square feet



2 Bedroom
1055 square feet

Pond View Townhomes

431-G Woodduck Place
 Woodbury, MN 55125
 651-702-0775

Professionally Managed By:

Northstar Residential

